

EDUCATION

RESOURCES & MATERIALS



**FOREST
INSPIRED
NATURE
DISCOVERY**



Education is at the forefront of our mission.

The FIND Outdoors Education Team strives to ensure that each of our sites offer ample opportunity for visitors to connect with the outdoors through forest-inspired nature discovery. We keep life-long learning at the forefront of our experiences, offering unique opportunities to discover the amazing characteristics of our managed sites.



Visitor Centers & Campgrounds

The FIND Outdoors Education Team provides high-quality programming at each of our visitor centers and campgrounds.



Guided environmental, cultural, and conservation programming for groups of all ages: The FIND Outdoors Education Team teaches about important conservation education topics essential to the FIND Outdoors mission as well as region-specific education.



Community Science Lab at The Cradle of Forestry: The FIND Outdoors Education Team at The Cradle of Forestry has partnered with the NC Museum of Natural History to build a new exhibit that puts visitors in the role of being a scientist while on the trails. This exciting new exhibit introduces the vocabulary, skills, and jobs done by various scientists like foresters, wildlife biologists, and hydrologists.



Leave No Trace Junior Ranger Program: Built on the 7 principles of the Leave No Trace ethic, this program introduces these essential guidelines to guests of all ages. Participants complete the interactive Junior Ranger Handbook on the trail and earn their very own Junior Ranger button.





Natural Inquirer: FIND Outdoors proudly partners with the *Natural Inquirer* to publish a variety of science education materials for students from Pre-K through Grade 12. The *Natural Inquirer* uses peer-reviewed, published research conducted by USDA Forest Service scientists and their collaborators to create a variety of journals, monographs, readers, and scientist cards.



Historical and Cultural Interpretation: The Cradle of Forestry and Gladie Cultural-Environmental Learning Center both have deep cultural and historical connections to the areas they serve. The FIND Outdoors Education Team uses these platforms to bring the past to life through living history days, interpretive programming and signage design, guest speakers, and demonstrations.



Site-Specific Scavenger Hunts: Scavenger hunts are always a great way to get our youngest visitors engaged at visitor centers.



Nocturnal Forest Friends Scavenger Hunt: Found at FIND-managed campgrounds and visitor centers, grab your Nocturnal Forest Friends Scavenger Hunt card and hit the trail to see if you can spot the hidden critters on the trail.



FIND Outdoors Coloring Pages: Based on the famous FIND Outdoors Forest Friends, guests of all ages can grab some FIND Outdoor crayons and color away, and you don't have to stay in the lines!

Special Events

The FIND Outdoors Education Team provides special educational events throughout the year.



WILDLIFE AND RESOURCE CONSERVATION

Local experts are invited to share their expertise and animals with guests.



Bear Days: The Appalachia Georgia Friends of the Bears join us at several FIND Outdoors locations to educate visitors on how to be good neighbors to these important members of the forest.



Raptor Rendezvous: A favorite for all, the good people at Georgia Mountain Falconry bring their majestic raptors out to Anna Ruby Falls for all to see and learn.



Snake Days: We welcome the Georgia Department of Natural Resources as they share their slithery friends with guests at Brasstown Bald and Anna Ruby Falls.



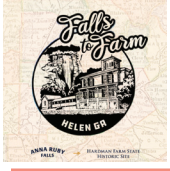
Bats of Georgia: The FIND Outdoors team partners with members of the Georgia Department of Natural Resources to teach about these amazing nocturnal creatures and the challenges they face.



“Earn a Badge” Scout Days at The Cradle of Forestry: Boy Scout and Girl Scout groups join our educators as they work on various skills needed to earn specific badges for their progress as a scout.

EXPLORING OUR NATURAL WORLD

These programs invite guests to join FIND Outdoor educators to experience public lands in a new way.



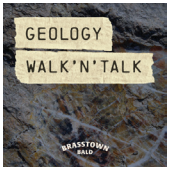
Falls to Farm Hike at Anna Ruby Falls: Join us as we partner with historic Hardman Farms for a beautiful and vigorous hike from Anna Ruby Falls to the family home of the fall's namesake.



Foxfire Night Hike at Anna Ruby Falls: This ticketed event is a must-see. The FIND Outdoors Education Team takes guests onto the trail at Anna Ruby Falls after dark to witness these bioluminescent larvae on the forest floor.



Twilight Blue Ghost Firefly Tours at The Cradle of Forestry: Held throughout May and June on the Forest Festival Trail at The Cradle of Forestry, these nighttime tours give guests a front row seat to this magical natural phenomenon.



Geology Walk n' Talk: Join the FIND Outdoors Education Team and trained professionals for a walk on our trails as they tell the history of the area through the eyes of a geologist.



Trick or Treat on Trail: This fun adventure can take place at any FIND Outdoors location. It features an interactive outdoor Fall/Halloween focused experience that is safe and family-friendly. Guests receive a booklet featuring nocturnal forest friends and then have the chance to search for them out on the trail.

CULTURAL EVENTS

These events draw on the long cultural heritage of the Southern Appalachians, to bring the skills and knowledge of the past to life.



Songcatchers Music Series at The Cradle of Forestry:

Based on the film of the same name, this concert series brings together lovers of the sounds of the Appalachians.



Camping in the Old Style: FIND Outdoors partners with local interpreters known as “The Acorn Patrol” to bring the “golden era” of camping of the early 20th century to life. Come and join them in their camp as they show the skills and craft exemplified by the works of Horace Kephart. From cooking demonstrations to storytelling, it’s not to be missed.



Forest Festival Day and Woodsman’s Meet at The Cradle of Forestry: Held for over three decades, this annual event brings together traditional crafters as well as collegiate wilderness sports teams to compete in traditional “lumberjack games”, as they vie to win the John G. Palmer Intercollegiate Woodsmen’s trophy.



Native American Craft and History: Come and meet regional experts at several FIND Outdoors visitor centers to learn about traditional Native American craft, folklore, and history.

DARK SKIES

These night-time events are catered to those who want to develop their photography skills in incredible outdoor settings.



Blue Ghost Photography Tour at The Cradle of Forestry: Join professional photographers as they guide you through how to best capture the elusive Blue Ghost Firefly.



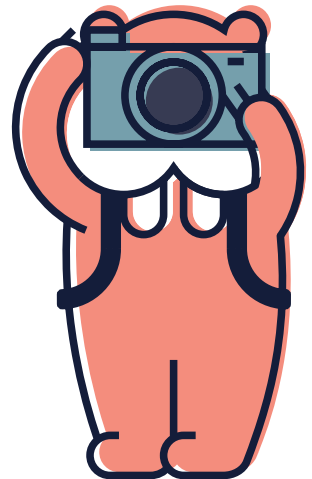
Star Party with PARI at The Cradle of Forestry: Join us as we partner with the Pisgah Astronomical Research Institute (PARI) for a night of viewing and learning about the Dark Skies Initiative.



Gazers of the Galaxy: Join members of the Atlanta Astronomy Club for a night of dark sky photography.



Astro Photography Workshop at Brasstown Bald: Join professional photographers at the highest point in Georgia as they assist guests in capturing amazing shots of the Milky Way.



FAMILY FUN FOR EVERYONE!

These events are guaranteed to have something for everyone in the family.



Community Science Saturdays at The Cradle of Forestry:

Based on our Community Science Lab, the FIND Outdoors Education Team join guests as they explore the various scientific disciplines at work on our public lands every day.



Woodsy Owl: Woodsy Owl, the beloved icon for environmental conservation for the USDA Forest Service, was designed as a mentor and inspiration for children to provide them with information and advice to help them appreciate nature. The FIND Outdoors Education Team has developed an amazing curriculum centered around these principles. This programming can be found at The Cradle of Forestry and Gladie Cultural-Environmental Learning Center during the summer as well as at FIND Outdoors-managed campgrounds.



The Great Wagon Road Game at The Cradle of Forestry:

This event features a trip back in time to travel the historic "Warriors Path" and later "Great Wagon Road." Based on the classic "Oregon Trail" game, we use the historic Biltmore Campus Trail and recreate all that went into following the path that many traveled as people moved from the cities of the 1700s and began populating the Southern Appalachians.



The Legend of Tommy Hodges at The Cradle of Forestry:

Come on up for the annual installment of The Legend of Tommy Hodges. Set in the early 20th century at the site of the first school of forestry in North America, you never know what those folks will be getting into this year!



Smokey Bear's Birthday at all FIND Outdoors Sites: We take the entire week before Smokey Bear's birthday to hand out lots of goodies and information about fire safety and the good work Smokey does to make sure we are all part of keeping wildfires under control on our public lands.



Woodsy Owl's Birthday: Celebrating Woodsy Owl's birthday gives us the chance to share more conservation education with a wider audience. His message is more relevant today than ever.



National Get Outdoors Day: Just like the name says, it's a day to get outdoors and enjoy our public lands. The FIND Outdoors Education Team provides programming that focuses on the Leave No Trace Junior Ranger program.

National Public Lands Day: We celebrate this day at all FIND Outdoors visitor centers in different ways.



At Brasstown Bald, we partner with the Georgia Appalachian Trail Club to turn the trail into a miniature version of the Appalachian Trail.

At The Cradle of Forestry, the FIND Outdoors Education Team works with local scout troops to lend a hand to this special site by removing invasive species, clearing brush, and doing the good work that comes with being a scout.



Reptiles of Kentucky: FIND Outdoors is partnering with Kentucky Reptile Zoo to provide live demonstrations where visitors can see these amazing reptiles up close and ask any questions they may have.



Trek to Tower Rock: Ever stared up at the large rock formations around the Red River Gorge and wondered, how did these form? Gladie Visitor Center offers a guided tour of Tower Rock. This relatively easy hike lasts about 1 to 1.5 hours with time to discuss rock formations, species that rely on them, and stewardship of the formations.



Creeks Critters & Chemistry: FIND Outdoors partners with Natural Areas and AmeriCorps for a day of creek exploration and a lesson on water quality assessments. Visitors get hands-on experience using lab equipment in the field, handling plenty of creek critters, and running chemical analyses of water samples.



Ask A Guide: Gladie Visitor Center partners with Bluegrass Climbing School to offer information about the world-class climbing surrounding the Red River Gorge. A certified climbing guide is on-site to answer questions about climbing, demonstrate equipment, and teach visitors about safety while out in the Gorge.



A Step Back in Time: Gladie staff offers special tours of the historic cabin for a glimpse into what life was like for the Ledford family in the late 1800s. You'll learn about the history of the homestead and farm, and the timeline of restoration efforts by the US Forest Service over the years.

GOT QUESTIONS? Start Here

DO I NEED A PERMIT?

Special Use Permit is required for large gatherings or ANY professional services — including photo/video, research, guiding, etc. Forest Product Permit is required to collect plants.

Permits are given by phone or appointment only. Sorry, no walk-up permits at this time.

(828)-877-3265 FOR EVENTS/COMMERCIAL USE PERMITS DIAL EXTENSION 333

fs.usda.gov/main/nfsnc/passes-permits



IS THE BLUE RIDGE PARKWAY OPEN?



Check for the latest conditions/closures:

nps.gov/blri

TRAILS & CAMPING?

Pisgah Ranger District has 400+ miles of trail, and there are several ways to camp legally. For camping details and popular trails visit:

gofindoutdoors.org/pisgah-visitor-center/



FOR GENERAL INFORMATION EMAIL:
SM.FS.PISGAHRD@USDA.GOV

**PISGAH
RANGER DISTRICT**

(828) 877-3265

FIND
-OUTDOORS-

GO **FIND** OUTDOORS.ORG



INFORMATIONAL HANDOUTS/AWARENESS:



Bear Safety Signage & Bear Aware Cards: Bear safety is an important part of our educational experiences. These cards, along with bear safety signage are available at all of our campgrounds and visitor centers.



Waterfalls & Recreation Area Maps: Printed maps providing information on waterfalls, recreation areas, and campgrounds in the area. Maps are offered in English and Spanish.



Recreate Responsibly with your Pets is an informative tip sheet on how to best prepare yourself and your animals for a fun time in the outdoors.



Information Boards and Kiosks at all campgrounds and visitor centers offer pertinent information about the site, safety, and surrounding areas.



Recreate Responsibly Posters featuring our FIND Forest Friends sharing the 7 keys to safely enjoying the outdoors can be found at all FIND Outdoors locations.



Visitor Center Passports offers a free/unique way for our visitors to collect stamps/stickers as they visit sites located in North Carolina, Georgia, and Kentucky. Visitors are encouraged to use the passport to document their journey as they FIND Outdoors.



FIND Outdoors Club de Exploradores

Achievement Badges



The Club de Exploradores is a bi-lingual outreach program that recruits middle school-aged students from the Hispanic community of Transylvania County and surrounding areas to join FIND Outdoors staff on monthly, all-day adventures in Pisgah National Forest. With the Cradle of Forestry serving as its base camp, club members and staff set out one Saturday each month to participate in a wide range of outdoor activities while learning about Leave No Trace principles.

This project was born out of the need to address the imbalance of who is enjoying and benefiting from living next to such a valuable resource as the Pisgah. With this in mind, we work to illustrate the many benefits of living in a gateway community to club members. From healthy lifestyles to the economic opportunities being taken advantage of by local small business owners, club members will see and feel the local community echoing the message that “these forests belong to you too!”.



The *Natural Inquirer* Partnership

FIND Outdoors proudly partners with the *Natural Inquirer* to publish a variety of science education materials for students from Pre-K through grade 12.

The *Natural Inquirer* uses peer-reviewed, published research conducted by USDA Forest Service scientists and their collaborators to create a variety of journals, monographs, readers, and scientist cards. On their website, you can browse all publications, download materials, access lesson plans, and other activities to accompany those materials

— like Science Hours and distance learning modules — and order copies of any

of their publications at no cost (not even shipping!).

They also provide additional teaching materials like interviews about the scientific process with USDA Forest Service scientists, science fair resources, and a huge list of other online resources.



A man with a large green backpack is carrying a young child on his back. They are in a forest, looking towards the trees. The man is wearing a light-colored t-shirt and shorts. The child is wearing a patterned dress and is holding a small object. The background is a dense forest with green foliage and tree trunks.

LET'S GO
FINDTM
ESTD OUTDOORS 1972

You can learn a lot in a classroom, but there is nothing quite like the experience of getting your hands dirty and really discovering something for yourself. That is why we offer educational opportunities to all ages, abilities, and income levels — encouraging active, healthy lifestyles, while making meaningful connections with our public lands.

Because, when you discover, you connect — when you connect, you care — and when you care, you protect. Ultimately, we want to make sure our public lands are protected for future generations.

That is why, through forest-inspired nature discovery, we help people FIND Outdoors.

GO **FIND** OUTDOORS.ORG